



**AIRSTREAM**<sup>®</sup> Interstate 19X

2025 TOURING COACHES

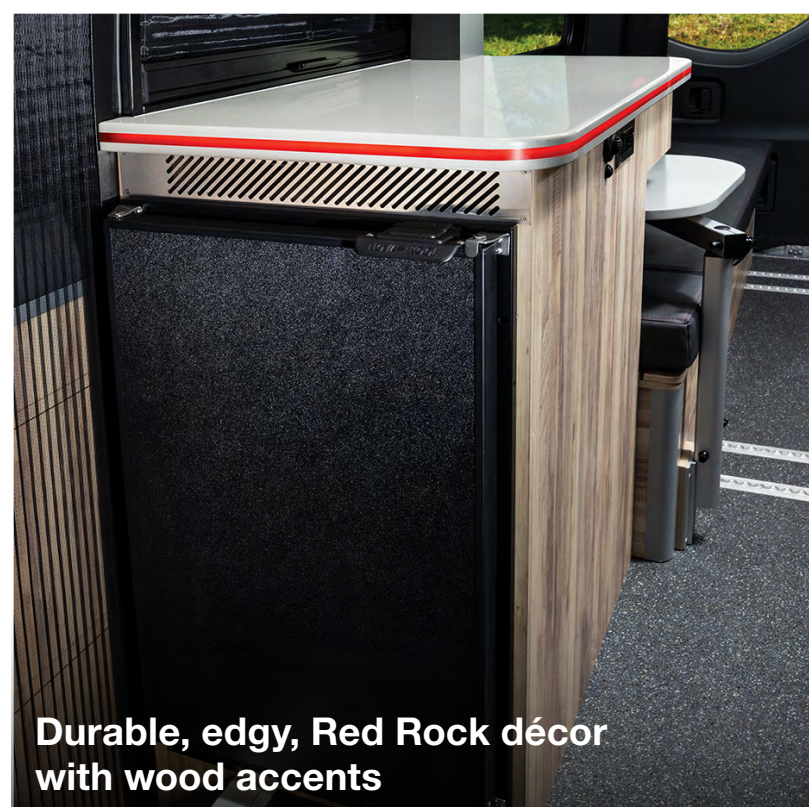


## About Interstate 19X

Built on the 19-foot Mercedes-Benz® Sprinter van chassis and equipped with standard all-wheel drive functionality, the Interstate 19X is purpose-made for outdoor and off-road enthusiasts who want to explore our natural world while enjoying the comforts of home. Exuding Airstream quality craftsmanship and iconic design, Interstate 19X features an aggressive stance, extreme comfort, cutting-edge amenities, and Best-in-Class safety and performance.

Built on the 19-foot Mercedes-Benz® Sprinter van chassis and equipped with AWD capability as standard, the Interstate 19X is purpose-made for outdoor and off-road enthusiasts who want to explore our natural world while enjoying the comforts of home. A highly maneuverable Class B motorhome, it's designed to equally handle highways and unpaved routes, off-grid boondocking and traditional camping, and the rigors of daily driving through parking lots, city streets, and neighborhoods.

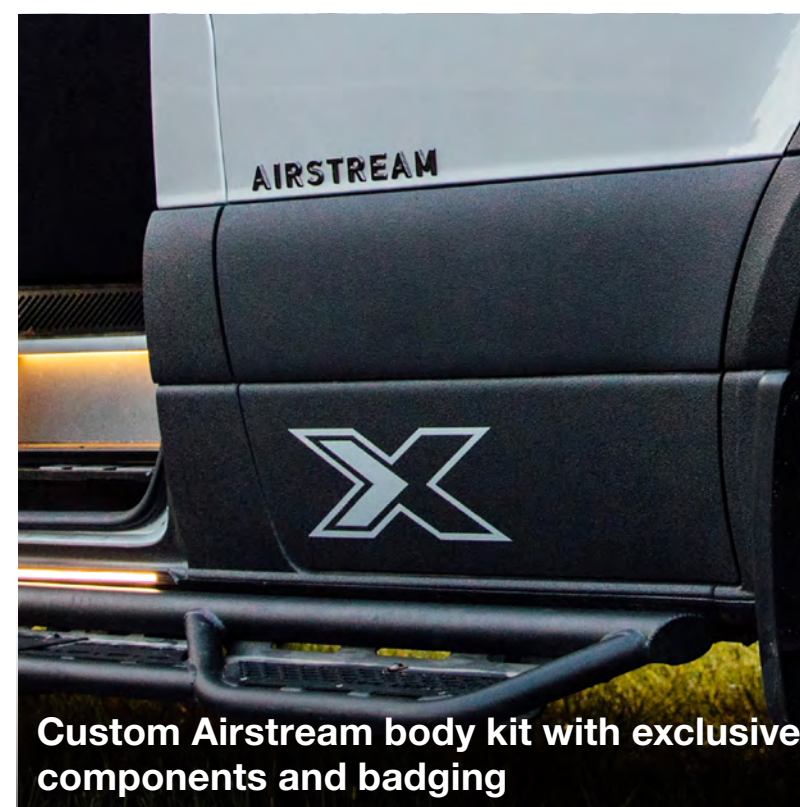
Equipped with rugged features and powerful capability, the Interstate 19X is the perfect companion for those seeking the thrill and fun that comes with venturing beyond the beaten path.



Durable, edgy, Red Rock décor with wood accents

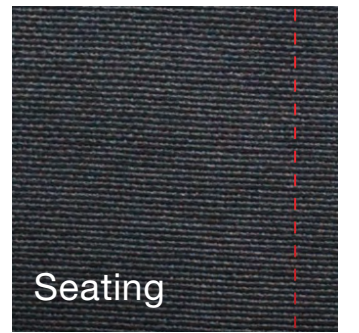


Rugged styling with a protective coating around the front, hood, rear and sides

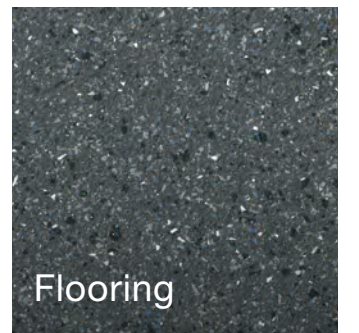


Custom Airstream body kit with exclusive components and badging

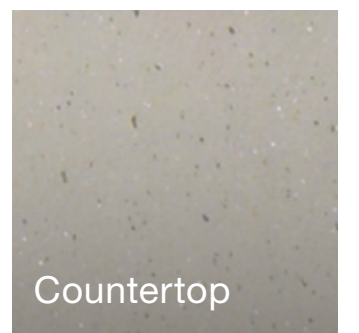
# Décor



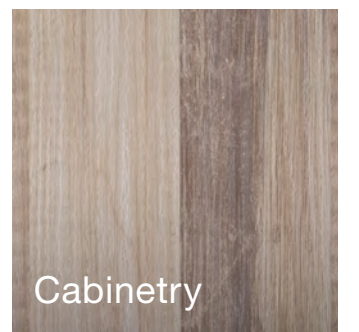
Seating



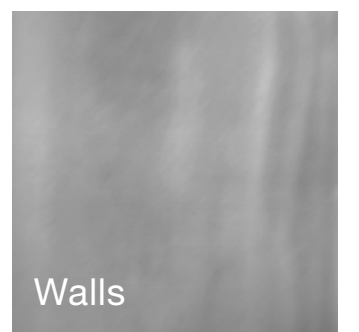
Flooring



Countertop



Cabinetry



Walls

## Red Rock



## Exterior Colors



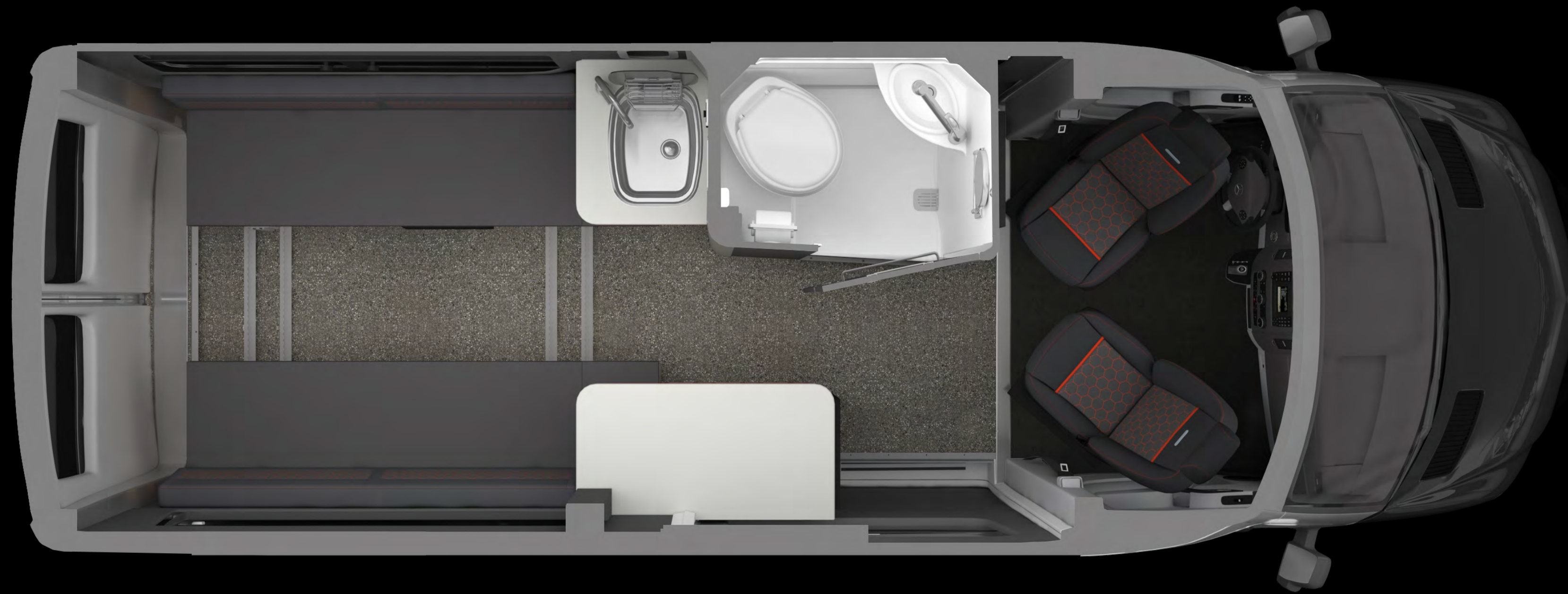
### Iridium Silver Metallic

Sleek and modern exterior color with protective coating around the front, hood, rear and sides



### Tenorite Grey Metallic

Elegant, understated and ready to roam



## Floor Plan

After a day of outdoor adventures, return to the comfort and luxury of the Interstate 19X so you can rest and recharge for whatever adventures come tomorrow. Enjoy a complete wet bath with shower, a fully equipped galley with plenty of prep space, and a spacious convertible sleeping/living/dining area that can be set in multiple configurations to suit your needs. An onboard generator provides the power you need for off-grid adventures that maintain the comforts of home. Even far from shore power hookups, the Interstate 19X can run the air conditioner for ultimate comfort and relaxation.

# Exterior Features

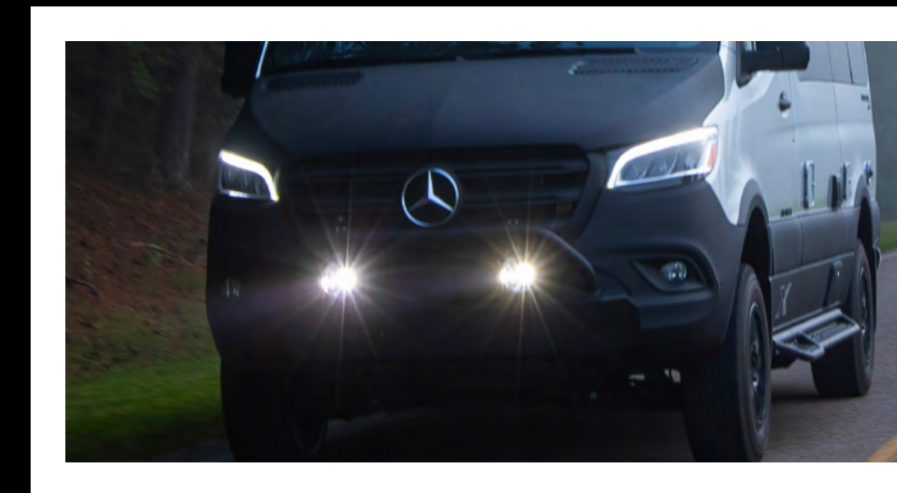
The Interstate 19X comes standard with AWD capability, enabling adventurers to get closer to nature, tackle challenging terrain, and ensure peace of mind even in the most remote locations. The exterior is not only ruggedly stylish but also built to withstand the rigors of heading off pavement. The protective coating on the lower body and front hood protects against road debris and scratches, while a Tenzing brush guard with integrated lights offers even more style while traveling off-road.



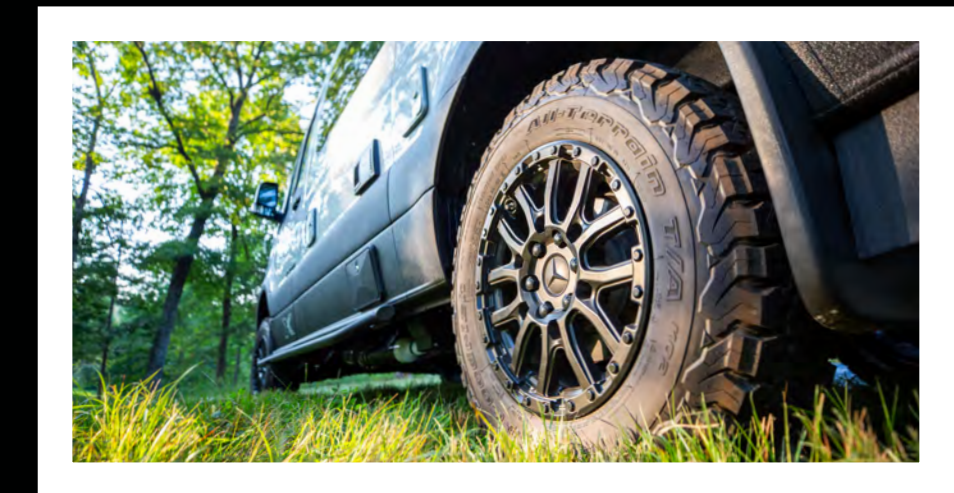
**1** Matte black running boards allow for easy entrance.



**2** An All-Wheel Drive power train enables more off-road adventures.



**3** Tenzing Brush guard with integrated LED lights provide rugged protection and illumination



**4** Black wheels with All-Terrain tires are equipped to get you there safely and in style.



**5** Powered armless patio awning extends with push-button ease.



**6** 250 Watts of solar keep your systems recharging and topped off.

# Specifications

Chassis Engine	Mercedes-Benz® Sprinter 2500 AWD Mercedes-Benz® 2.0L Turbo Charged 4-Cylinder High Output Diesel
Horsepower/Torque	208 HP @ 3,600 RPM 332 lb-ft torque @ 1400 - 2400 RPM
Transmission	9G-TRONIC Plus Automatic
GVWR/GCWR	9,050 lbs / 13,930 lbs
UVW****	7,814 lbs
OCCC****	1,236 lbs
Tow Capacity**	Up to 5,000 lbs
Emissions	BlueTEC SCR Technology, 50 State – EPA/CARB Standards
Wheelbase	144"
MPG*	16-18 Estimated Highway
Chassis Safety System	Mercedes-Benz® Adaptive ESP® (Electronic Stability Program)
Tow Package	Hitch, 7 Pin Trailer Plug, Brake Control Pre-wire
Trailer Safety System	Mercedes-Benz® Trailer Stability Assist System
Overall Length	20 ft. 1 in.
Overall Height	9 ft. 9 in. (including A/C)
Overall Width	7 ft. 8.5 in (w/mirrors), 6 ft. 7.5 in.
Interior Height/Width	6 ft. 2 in. / 5 ft. 10 in.
Seats/Sleeps	4/2
Tank Capacities	20 gals (Fresh), 16 gals (Grey), 9 gals (Waste)
LPG	7.8 gals (33 lbs) 80% fill
Diesel Fuel	24.5 gals
Air Conditioner	13,500 BTU with Soft Start
Furnace	LPG Fired Truma Combi Eco Plus
Water Heater	LPG Fired Truma Combi Eco Plus
Heated Tanks	Fresh and Grey Tanks (12 volt)
Refrigerator & Freezer	3.1 cu. ft. Fridge/ .33 cu. ft. Freezer (12 volt)
Microwave	0.7 cu. ft. Locker Microwave

Cooktop	1,000 Watt Single Burner Induction (Stowable)
Safety Components	LP Gas Detector, Smoke and CO <sub>2</sub> Alarm, Fire Extinguisher and First Aid Kit
Plumbing System	Macerator Pump System
TV Antenna	Omni-Directional, VHF/UHF/FM
TV Cable/Satellite Port	Exterior Coaxial Connection for Portable Antenna, Sat System, or Cable
Connected 5G Antenna	Pre-wired for Connected Service
Electrical System	Multiplex Bluetooth App Control System with Touch Screen for Energy Management System
Converter/Inverter	80 amp Multi-stage Charger, 2,000 Watt Pure Sine Inverter
Generator	2.5 kW (LPG) Ultra Quiet Generator with Remote Start
Batteries (Coach)	2 – 100 Ah Deep Cycle Lithium Batteries (LiFePO4) with Built-in Heater
Shore Power	30 Amp Service w/Smart Plug
Solar Power	250 Watt System and External Solar Ports
E1 Package	OPT
Front Bed System	OPT
Support	3 Year 24/7 Coach-Net® Roadside Assistance
Warranty***	3 Years/36,000 Miles Airstream 5 Years/75,000 Miles Mercedes-Benz® Chassis 5 Years/100,000 Miles Mercedes-Benz® Engine & Drive Train
(Chassis specs may vary, contact your Airstream Dealer)	

## Exterior

Durable Black Protective Coating (lower side moldings)	STD
Durable Black Protective Coating (front & rear bumpers)	
Durable Black Protective Coating (front hood)	
Durable Black Wheels	STD
All Season-All Terrain Rugged On/Off Road Tires	STD
Black Running Boards (driver/passenger side)	STD
Tenzing Front Brush Guard with HD LED Lights	STD
Black Power Armless Patio Awning w/ LED Lighting	STD
Under-Carriage LED Lights	STD
Exterior Shower	STD
Exterior Sliding Screen Door (side)	STD
Exterior Zippered Screen System (rear)	STD
Exterior Gear Wash Station (rear)	STD

## Safety

Multiple Safety Air Bags	STD
Active Brake Assist	STD
Active Lane Keeping Assist	STD
Active Distance Assist - Distronic Plus	STD
Active Driver Attention Assist	STD
E-Call Assist	STD
Traffic Sign Assist	STD
Wet Wiper System	STD
360 Degree Camera	STD

## Interior

Airstream Aluminum (walls, ceiling, window trim)	STD
Colorado Black UltraLeather with Stone Inset (front seats)	STD
Marine-Grade Carbon Gray (rear seating/sleeping)	STD
Rugged Grey Flooring (waterproof, stain and scratch resistant)	STD
Flush Mount Matte Finish Cabinets	STD
Flex Bed System with comfort support system (converts to 70" x 74" total or a 35" x 74" individual sleeping area)	STD
Rear Convertible Space (sleeping, living, working, storing,...)	STD
Exhaust Fan	STD
Modular Table System (two mounting positions)	STD
Bathroom (heated wetbath with toilet, shower, sink)	STD
Galley (solid surface countertop w/edge band lighting, sink, storage)	STD

## Interior Storage

Aluminum Aircraft L-Track Storage System (Ceiling, Floor, Walls)	STD
Flex Storage Solutions (hang, secure, tie-down, cinch gear)	STD
Overhead Storage Compartments/Solutions	STD
Lower Storage Compartments (under seating)	STD

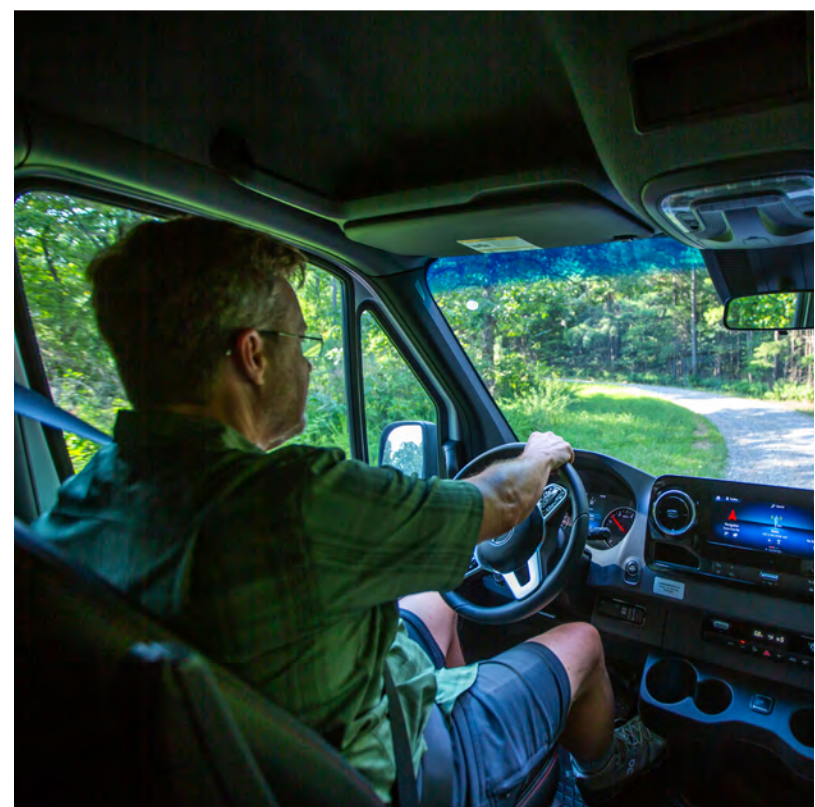
\* Actual mileage may vary due to load, driving style, and overall conditions.  
 \*\* Typical tow capacity will vary and is dependent upon build spec and intended vehicle loading with people, cargo, and fluids.  
 \*\*\* New Vehicle Limited Warranty. Individual components may vary. See Owners Manual for specific warranty coverage and information.  
 \*\*\*\* Weights are approximate. See Vehicle Sticker for specific vehicle information.

# Why You'll Love It

With clever storage throughout, Interstate 19X has plenty of room to bring along travel necessities and all the gear your adventure requires. The spacious rear area offers room for paddleboards, bikes, or other large gear, with an L-track storage system on the floors, walls, and ceiling to securely stow your gear.

Hit the road to big adventures in a small-footprint design that maximizes use of space.

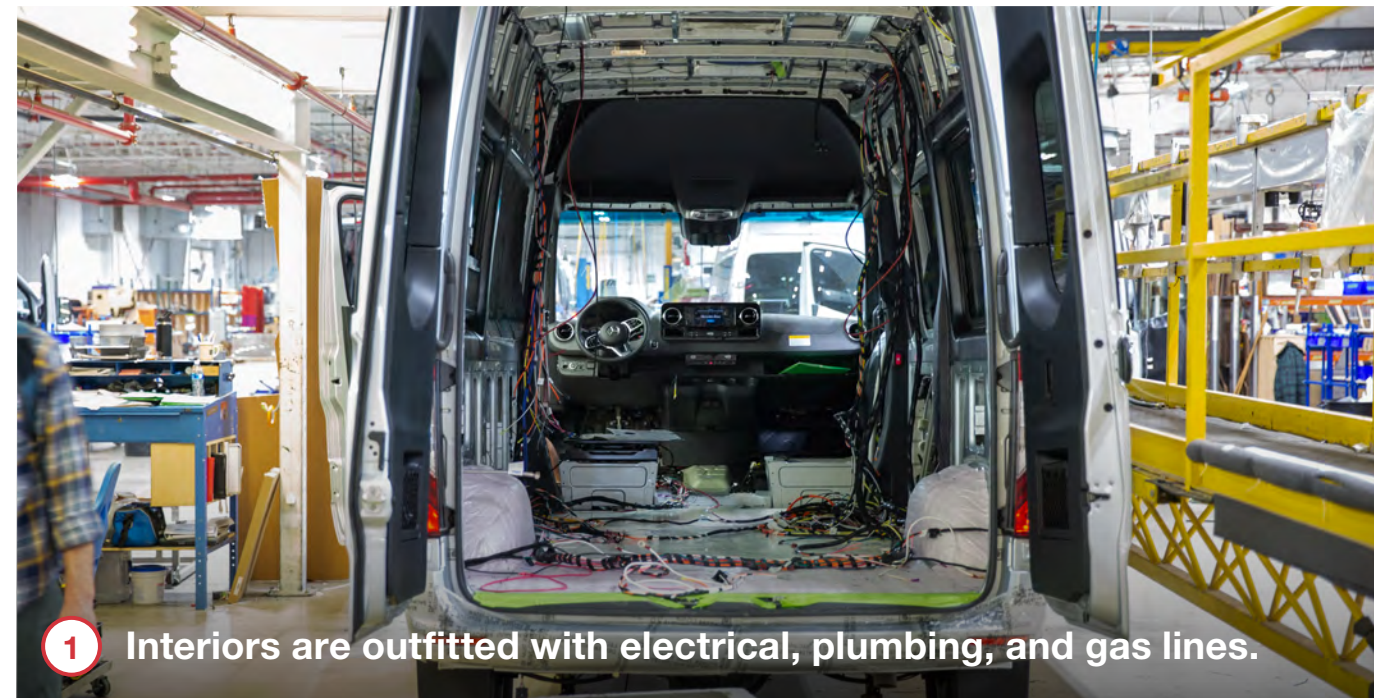
Add the optional E1 Package to add even more off-grid capability, with larger batteries and a single-fuel-source heating and hot water system that draws fuel from the vehicle's tank.





# How It's Made

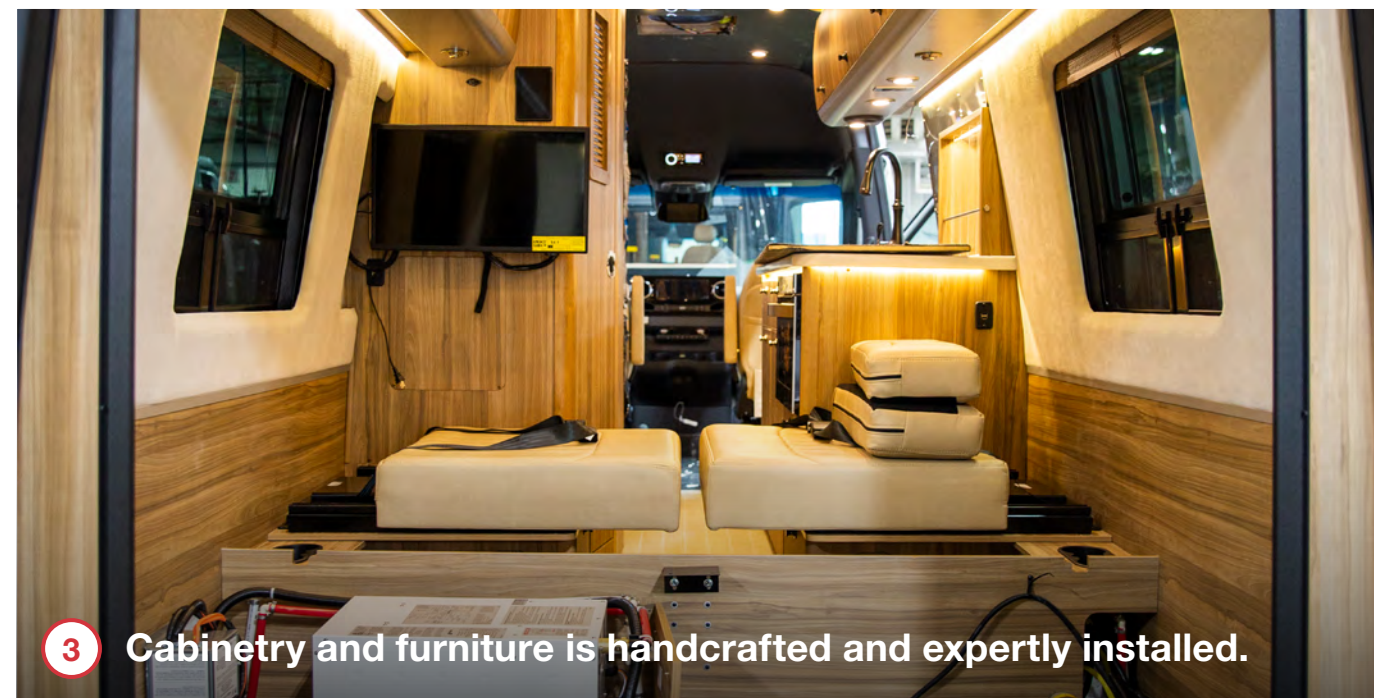
Each Mercedes-Benz Sprinter van chassis arrives in Jackson Center, Ohio fully loaded with safety and security features and one of the most powerful and dependable engines under the hood. Our expert craftspeople add external features like RV windows, vents, air conditioners, awnings, and undercarriage features like generators, holding tanks, and batteries. Standard seats are removed and re-upholstered with plush Ultraleather, while the interior is outfitted with electrical wiring harnesses, plumbing, gas lines, and insulation. We hand-craft every cabinet and storage locker in our woodshop, which are then installed alongside showers, beds, tables, and kitchen appliances. Every Airstream touring coach is put through an extensive water check to ensure there are no leaks before quality inspection teams test every component, system, and function before it goes out the door to a customer.



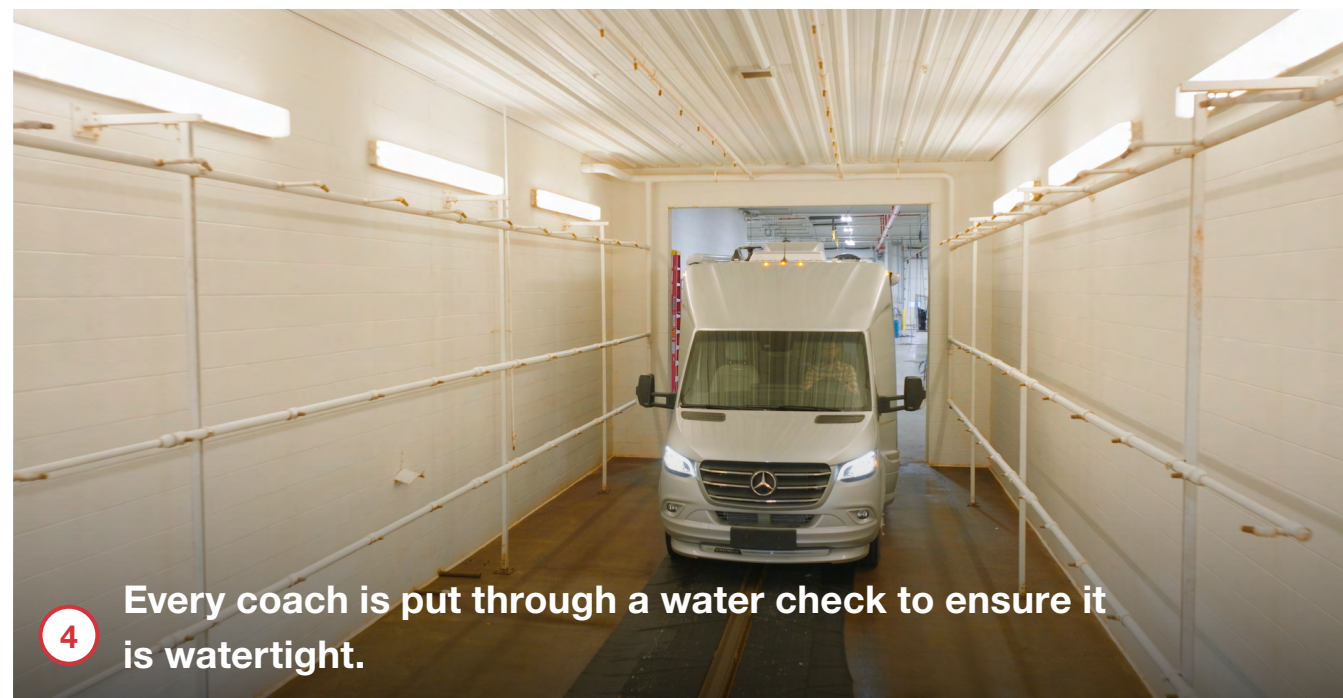
1 Interiors are outfitted with electrical, plumbing, and gas lines.



2 Seating is upholstered in-house with Ultraleather fabric.



3 Cabinetry and furniture is handcrafted and expertly installed.



4 Every coach is put through a water check to ensure it is watertight.



419 West Pike Street,  
P.O. Box 629  
Jackson Center, OH  
45334 USA  
937-596-6111

[www.airstream.com](http://www.airstream.com)

# **AIRSTREAM<sup>®</sup>** + **Mercedes-Benz<sup>®</sup>**

## Roll with the Best<sup>®</sup>

Product information, specifications, and photography in this brochure were as accurate as possible at time of printing. Photographs may contain some features that are optional on your vehicle.

Since we continually strive to improve our products, actual products may differ. Prices and specifications are subject to change without notice. All capacities are approximate and dimensions are nominal. Some features or options may be different or unavailable in other countries.

**WARNING** – The recreational vehicle weight must remain within the manufacturer's specified chassis weight limit. Do not overload the recreational vehicle through the addition of water, options, cargo or otherwise. Your safety depends on not overloading the trailer, axles, and tires.

AIRSTREAM<sup>®</sup>, the Airstream travel trailer trade dress, and all related model names, slogans, logos, trade dress, and trademarks are owned or used under license by Airstream, Inc. All other trademarks are owned by their respective owners.