



AIRSTREAM[®] Interstate 19X

2025 TOURING COACHES

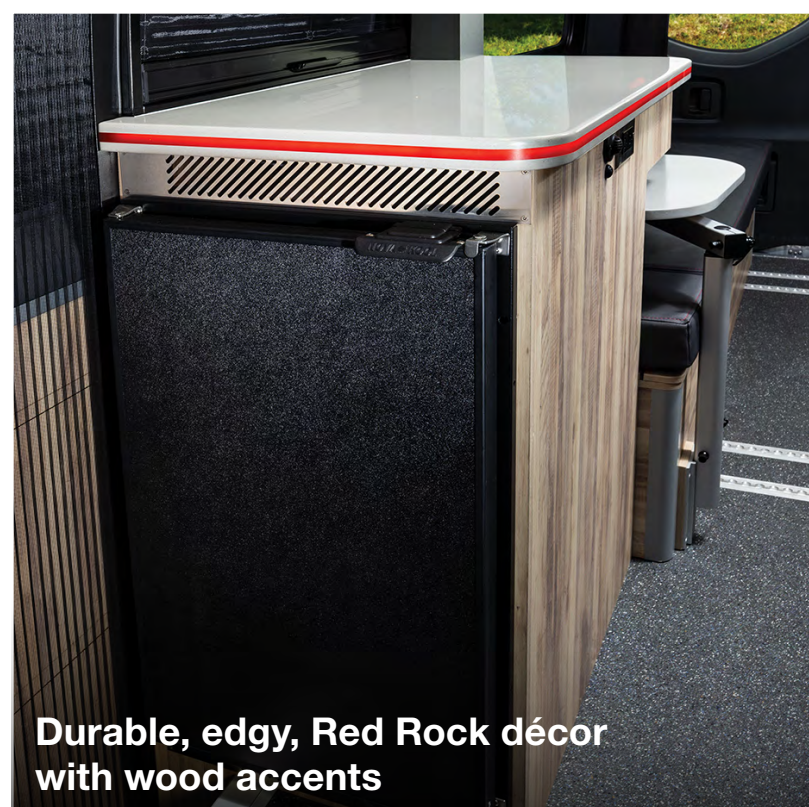


About Interstate 19X

Built on the 19-foot Mercedes-Benz® Sprinter van chassis and equipped with standard all-wheel drive functionality, the Interstate 19X is purpose-made for outdoor and off-road enthusiasts who want to explore our natural world while enjoying the comforts of home. Exuding Airstream quality craftsmanship and iconic design, Interstate 19X features an aggressive stance, extreme comfort, cutting-edge amenities, and Best-in-Class safety and performance.

Built on the 19-foot Mercedes-Benz® Sprinter van chassis and equipped with 4x4 capability as standard, the Interstate 19X is purpose-made for outdoor and off-road enthusiasts who want to explore our natural world while enjoying the comforts of home. A highly maneuverable Class B motorhome, it's designed to equally handle highways and unpaved routes, off-grid boondocking and traditional camping, and the rigors of daily driving through parking lots, city streets, and neighborhoods.

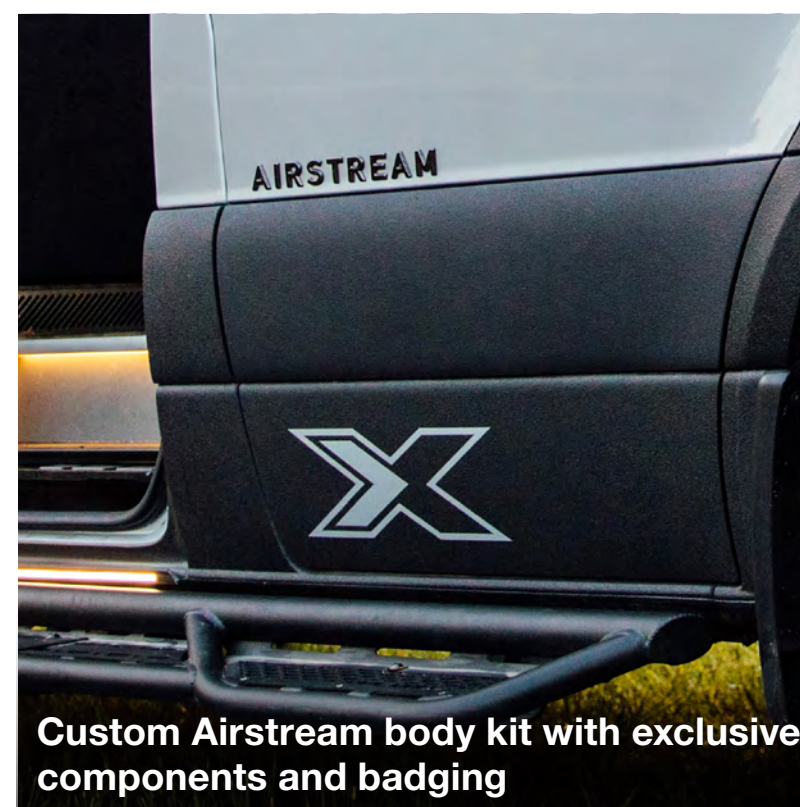
Equipped with rugged features and powerful capability, the Interstate 19X is the perfect companion for those seeking the thrill and fun that comes with venturing beyond the beaten path.



Durable, edgy, Red Rock décor with wood accents

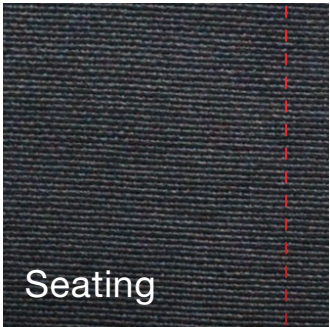


Rugged styling with a protective coating around the front, hood, rear and sides

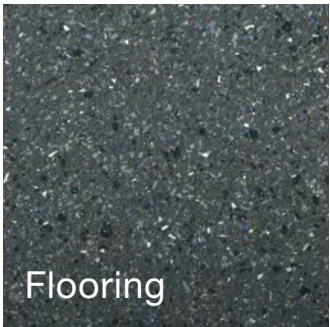


Custom Airstream body kit with exclusive components and badging

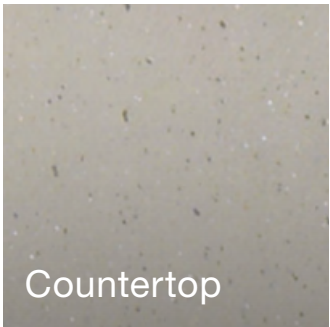
Décor



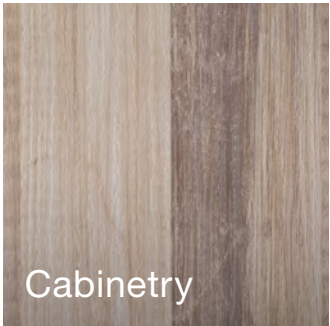
Seating



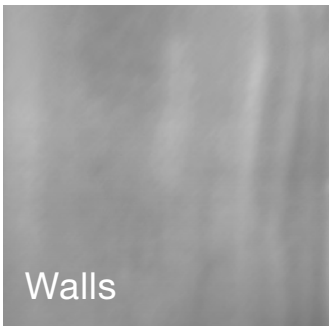
Flooring



Countertop



Cabinetry



Walls

Red Rock



Exterior Colors



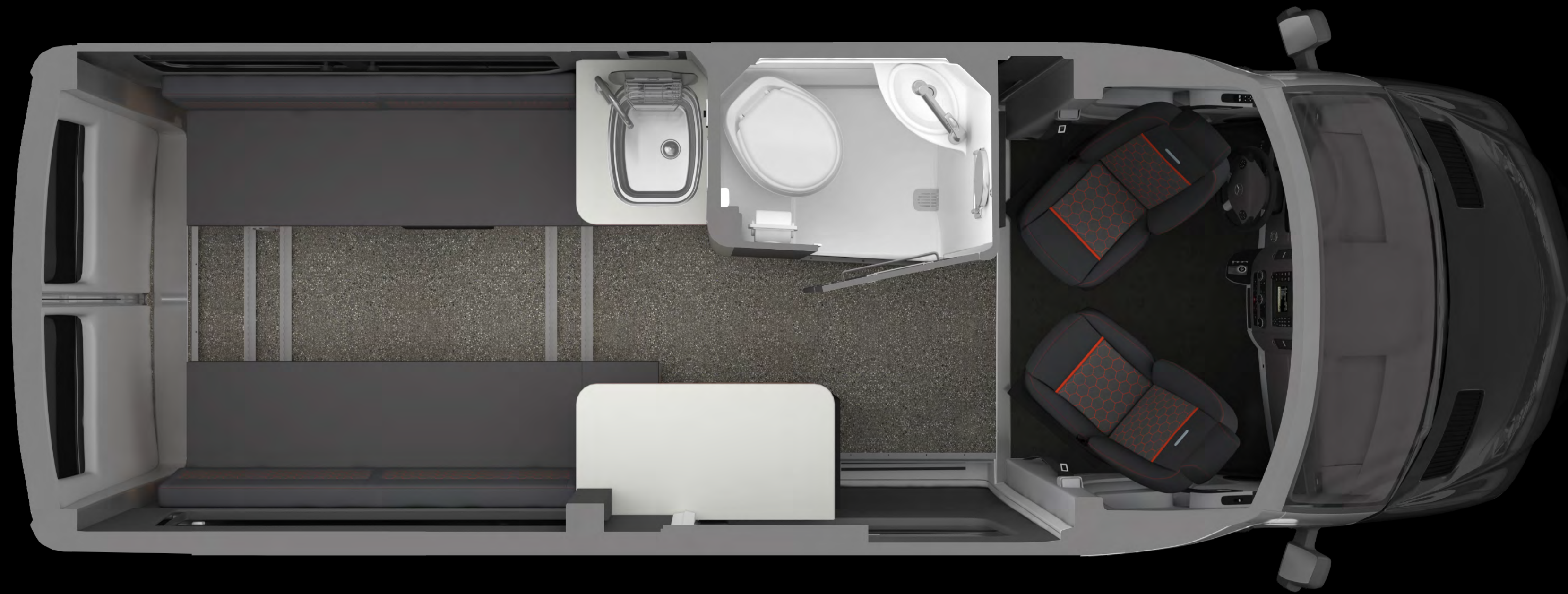
Iridium Silver Metallic

Sleek and modern exterior color with protective coating around the front, hood, rear and sides



Tenorite Grey Metallic

Elegant, understated and ready to roam



Floor Plan

After a day of outdoor adventures, return to the comfort and luxury of the Interstate 19X so you can rest and recharge for whatever adventures come tomorrow. Enjoy a complete wet bath with shower, a fully equipped galley with plenty of prep space, and a spacious convertible sleeping/living/dining area that can be set in multiple configurations to suit your needs. An onboard generator provides the power you need for off-grid adventures that maintain the comforts of home. Even far from shore power hookups, the Interstate 19X can run the air conditioner for ultimate comfort and relaxation.

Exterior Features

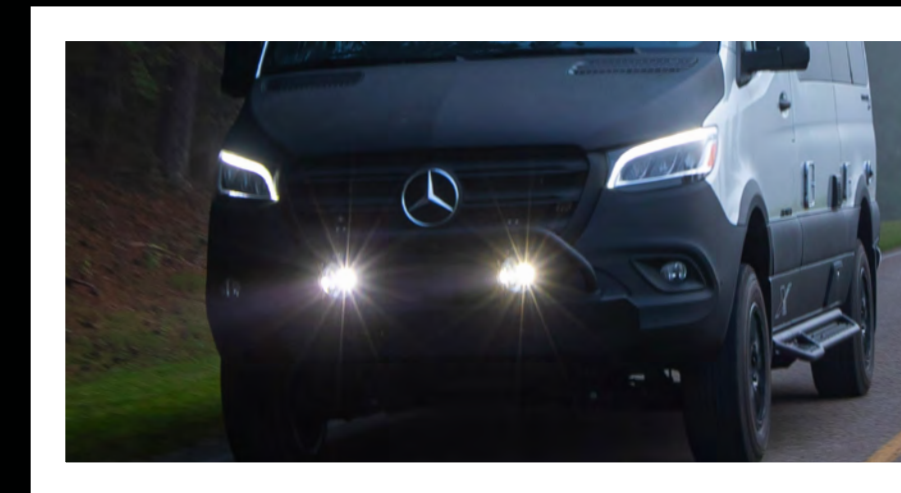
The Interstate 19X comes standard with AWD capability, enabling adventurers to get closer to nature, tackle challenging terrain, and ensure peace of mind even in the most remote locations. The exterior is not only ruggedly stylish but also built to withstand the rigors of heading off pavement. The protective coating on the lower body and front hood protects against road debris and scratches, while a Tenzing brush guard with integrated lights offers even more style while traveling off-road.



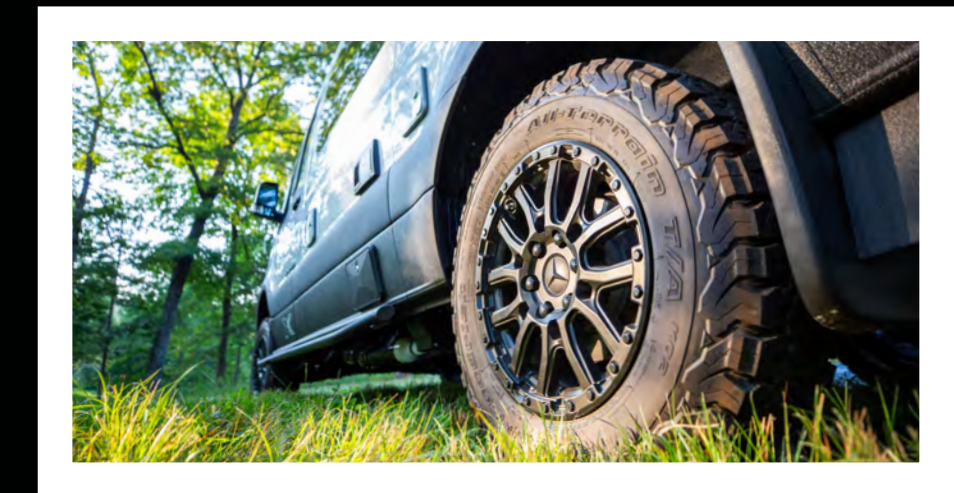
1 Matte black running boards allow for easy entrance.



2 An All-Wheel Drive power train enables more off-road adventures.



3 Tenzing Brush guard with integrated LED lights provide rugged protection and illumination



4 Black wheels with All-Terrain tires are equipped to get you there safely and in style.



5 Powered armless patio awning extends with push-button ease.



6 250 Watts of solar keep your systems recharging and topped off.

Specifications

| | |
|------------------------|--|
| Chassis Engine | Mercedes-Benz® Sprinter 2500 AWD Mercedes-Benz® 2.0L Turbo Charged 4-Cylinder High Output Diesel |
| Horsepower/Torque | 208 HP @ 3,600 RPM 332 lb-ft torque @ 1400 - 2400 RPM |
| Transmission | 9G-TRONIC Plus Automatic |
| GVWR/GCWR | 9,050 lbs / 13,930 lbs |
| UVW**** | 7,814 lbs |
| OCCC**** | 1,236 lbs |
| Tow Capacity** | Up to 5,000 lbs |
| Emissions | BlueTEC SCR Technology, 50 State – EPA/CARB Standards |
| Wheelbase | 144" |
| MPG* | 16-18 Estimated Highway |
| Chassis Safety System | Mercedes-Benz® Adaptive ESP® (Electronic Stability Program) |
| Tow Package | Hitch, 7 Pin Trailer Plug, Brake Control Pre-wire |
| Trailer Safety System | Mercedes-Benz® Trailer Stability Assist System |
| Overall Length | 20 ft. 1 in. |
| Overall Height | 9 ft. 9 in. (including A/C) |
| Overall Width | 7 ft. 8.5 in (w/mirrors), 6 ft. 7.5 in. |
| Interior Height/Width | 6 ft. 2 in. / 5 ft. 10 in. |
| Seats/Sleeps | 4/2 |
| Tank Capacities | 20 gals (Fresh), 16 gals (Grey), 9 gals (Waste) |
| LPG | 7.8 gals (33 lbs) 80% fill |
| Diesel Fuel | 24.5 gals |
| Air Conditioner | 13,500 BTU with Soft Start |
| Furnace | LPG Fired Truma Combi Eco Plus |
| Water Heater | LPG Fired Truma Combi Eco Plus |
| Heated Tanks | Fresh and Grey Tanks (12 volt) |
| Refrigerator & Freezer | 3.1 cu. ft. Fridge/ .33 cu. ft. Freezer (12 volt) |
| Microwave | 0.7 cu. ft. Locker Microwave |

| | |
|---|--|
| Cooktop | 1,000 Watt Single Burner Induction (Stowable) |
| Safety Components | LP Gas Detector, Smoke and CO ₂ Alarm, Fire Extinguisher and First Aid Kit |
| Plumbing System | Macerator Pump System |
| TV Antenna | Omni-Directional, VHF/UHF/FM |
| TV Cable/Satellite Port | Exterior Coaxial Connection for Portable Antenna, Sat System, or Cable |
| Connected 5G Antenna | Pre-wired for Connected Service |
| Electrical System | Multiplex Bluetooth App Control System with Touch Screen for Energy Management System |
| Converter/Inverter | 80 amp Multi-stage Charger, 2,000 Watt Pure Sine Inverter |
| Generator | 2.5 kW (LPG) Ultra Quiet Generator with Remote Start |
| Batteries (Coach) | 2 – 100 Ah Deep Cycle Lithium Batteries (LiFePO4) with Built-in Heater |
| Shore Power | 30 Amp Service w/Smart Plug |
| Solar Power | 250 Watt System and External Solar Ports |
| E1 Package | OPT |
| Front Bed System | OPT |
| Support | 3 Year 24/7 Coach-Net® Roadside Assistance |
| Warranty*** | 3 Years/36,000 Miles Airstream 5 Years/75,000 Miles Mercedes-Benz® Chassis 5 Years/100,000 Miles Mercedes-Benz® Engine & Drive Train |
| (Chassis specs may vary, contact your Airstream Dealer) | |

Exterior

| | |
|---|-----|
| Durable Black Protective Coating (lower side moldings) | STD |
| Durable Black Protective Coating (front & rear bumpers) | |
| Durable Black Protective Coating (front hood) | |
| Durable Black Wheels | STD |
| All Season-All Terrain Rugged On/Off Road Tires | STD |
| Black Running Boards (driver/passenger side) | STD |
| Tenzing Front Brush Guard with HD LED Lights | STD |
| Black Power Armless Patio Awning w/ LED Lighting | STD |
| Under-Carriage LED Lights | STD |
| Exterior Shower | STD |
| Exterior Sliding Screen Door (side) | STD |
| Exterior Zippered Screen System (rear) | STD |
| Exterior Gear Wash Station (rear) | STD |

Safety

| | |
|---|-----|
| Multiple Safety Air Bags | STD |
| Active Brake Assist | STD |
| Active Lane Keeping Assist | STD |
| Active Distance Assist - Distronic Plus | STD |
| Active Driver Attention Assist | STD |
| E-Call Assist | STD |
| Traffic Sign Assist | STD |
| Wet Wiper System | STD |
| 360 Degree Camera | STD |

Interior

| | |
|---|-----|
| Airstream Aluminum (walls, ceiling, window trim) | STD |
| Colorado Black UltraLeather with Stone Inset (front seats) | STD |
| Marine-Grade Carbon Gray (rear seating/sleeping) | STD |
| Rugged Grey Flooring (waterproof, stain and scratch resistant) | STD |
| Flush Mount Matte Finish Cabinets | STD |
| Flex Bed System with comfort support system (converts to 70" x 74" total or a 35" x 74" individual sleeping area) | STD |
| Rear Convertible Space (sleeping, living, working, storing,...) | STD |
| Exhaust Fan | STD |
| Modular Table System (two mounting positions) | STD |
| Bathroom (heated wetbath with toilet, shower, sink) | STD |
| Galley (solid surface countertop w/edge band lighting, sink, storage) | STD |

Interior Storage

| | |
|--|-----|
| Aluminum Aircraft L-Track Storage System (Ceiling, Floor, Walls) | STD |
| Flex Storage Solutions (hang, secure, tie-down, cinch gear) | STD |
| Overhead Storage Compartments/Solutions | STD |
| Lower Storage Compartments (under seating) | STD |

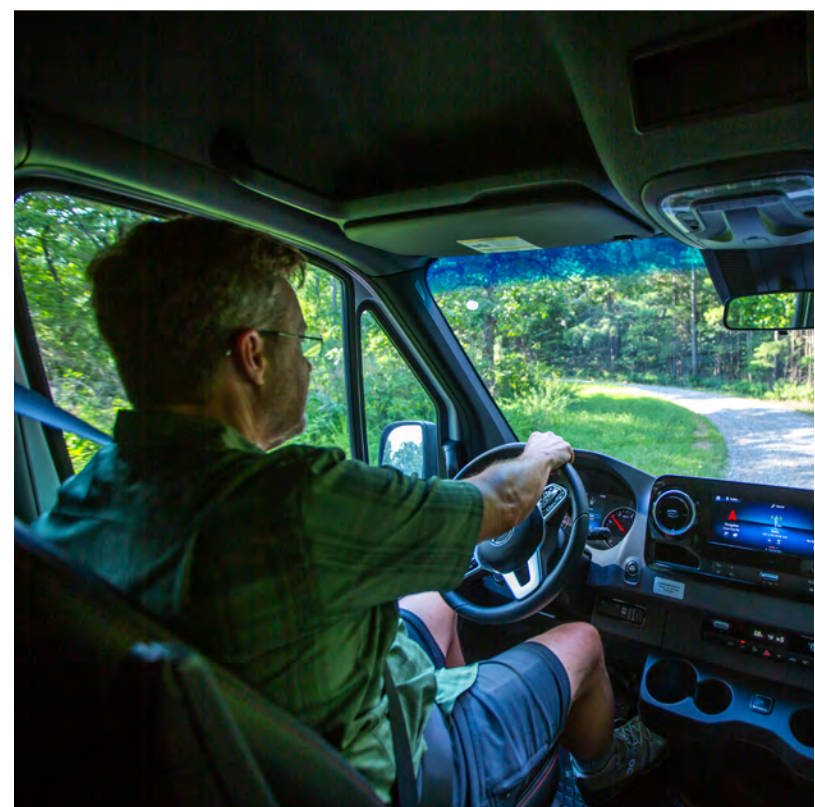
* Actual mileage may vary due to load, driving style, and overall conditions.
 ** Typical tow capacity will vary and is dependent upon build spec and intended vehicle loading with people, cargo, and fluids.
 *** New Vehicle Limited Warranty. Individual components may vary. See Owners Manual for specific warranty coverage and information.
 **** Weights are approximate. See Vehicle Sticker for specific vehicle information.

Why You'll Love It

With clever storage throughout, Interstate 19X has plenty of room to bring along travel necessities and all the gear your adventure requires. The spacious rear area offers room for paddleboards, bikes, or other large gear, with an L-track storage system on the floors, walls, and ceiling to securely stow your gear.

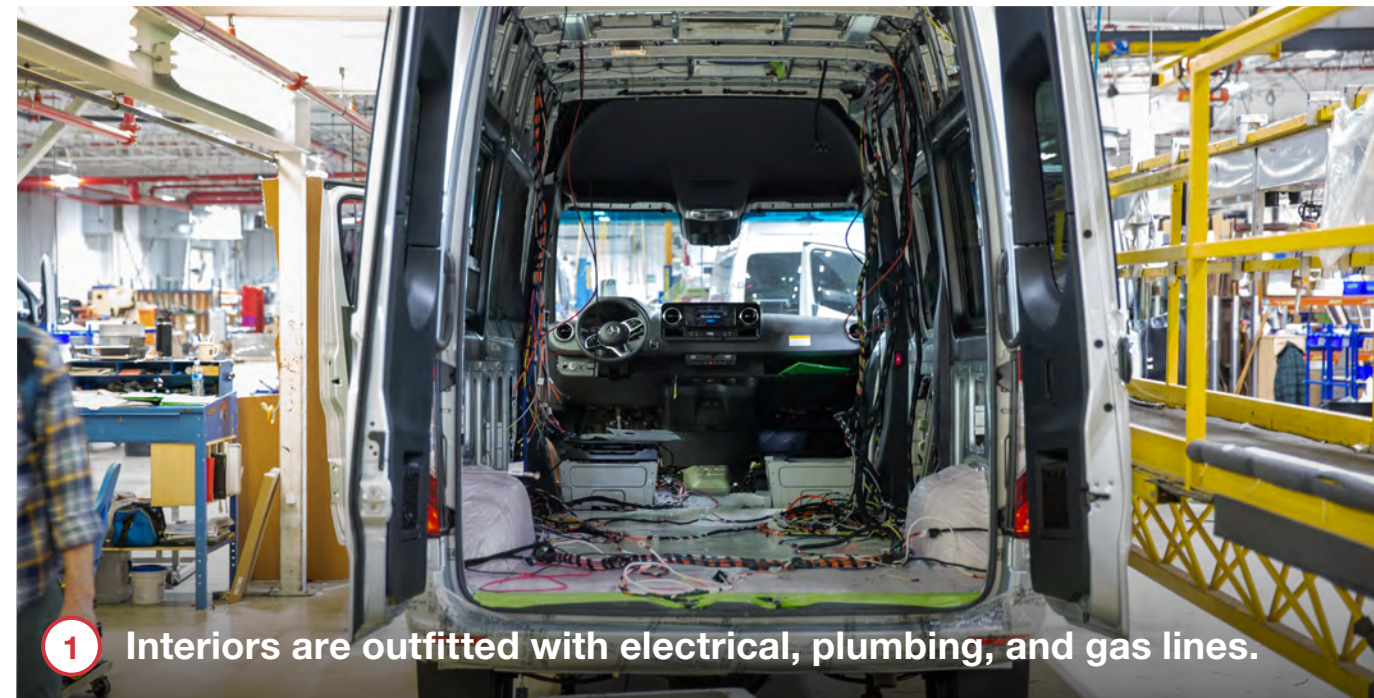
Hit the road to big adventures in a small-footprint design that maximizes use of space.

Add the optional E1 Package to add even more off-grid capability, with larger batteries and a single-fuel-source heating and hot water system that draws fuel from the vehicle's tank.



How It's Made

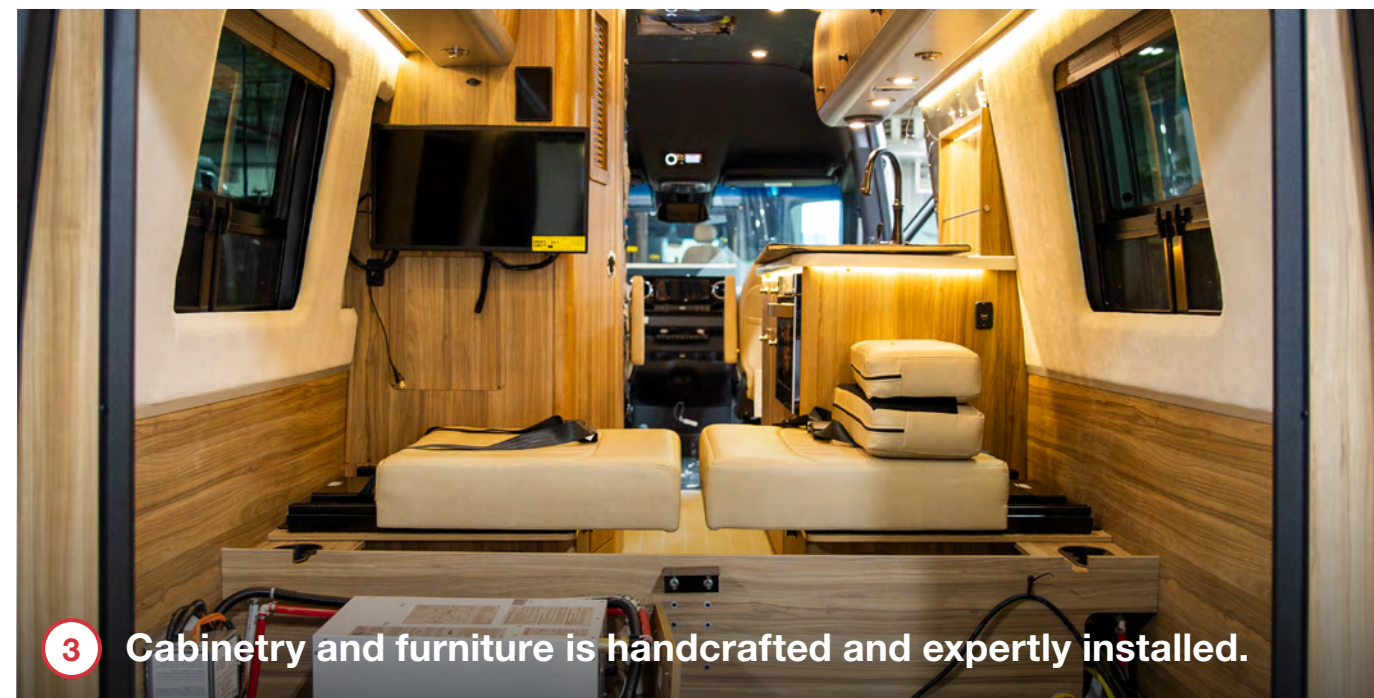
Each Mercedes-Benz Sprinter van chassis arrives in Jackson Center, Ohio fully loaded with safety and security features and one of the most powerful and dependable engines under the hood. Our expert craftspeople add external features like RV windows, vents, air conditioners, awnings, and undercarriage features like generators, holding tanks, and batteries. Standard seats are removed and re-upholstered with plush Ultraleather, while the interior is outfitted with electrical wiring harnesses, plumbing, gas lines, and insulation. We hand-craft every cabinet and storage locker in our woodshop, which are then installed alongside showers, beds, tables, and kitchen appliances. Every Airstream touring coach is put through an extensive water check to ensure there are no leaks before quality inspection teams test every component, system, and function before it goes out the door to a customer.



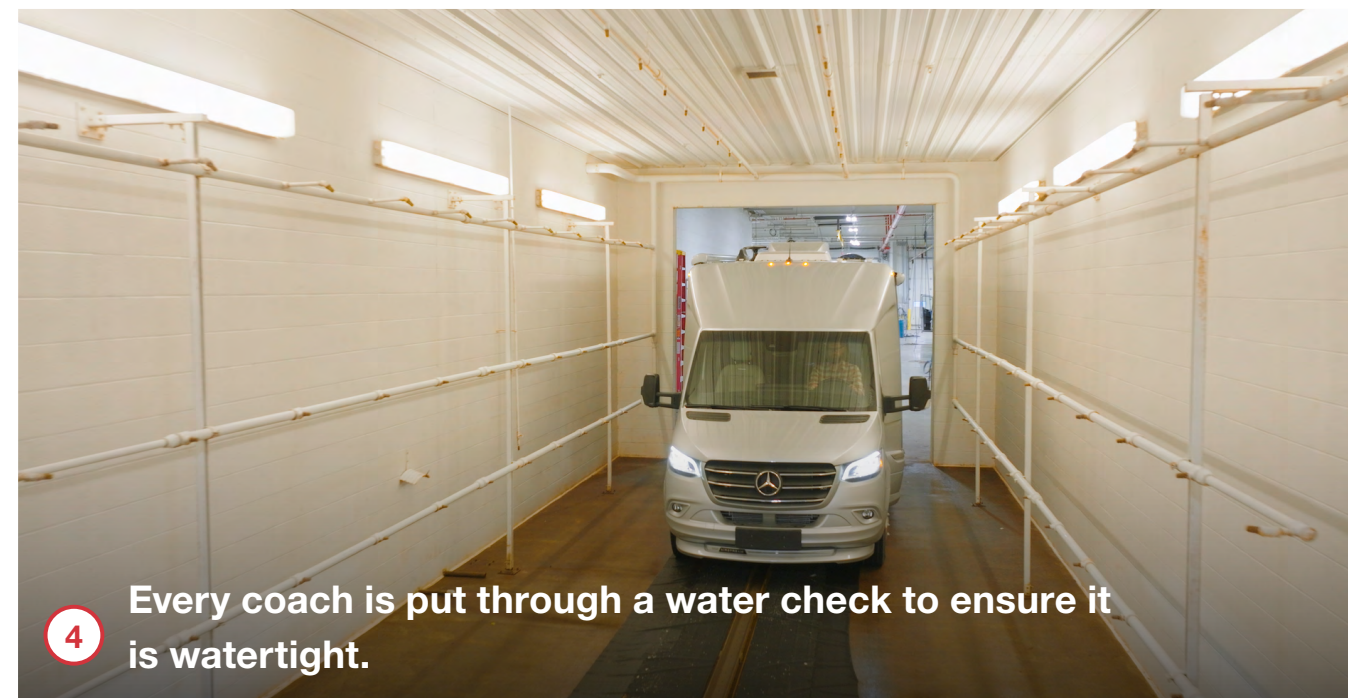
1 Interiors are outfitted with electrical, plumbing, and gas lines.



2 Seating is upholstered in-house with Ultraleather fabric.



3 Cabinetry and furniture is handcrafted and expertly installed.



4 Every coach is put through a water check to ensure it is watertight.



419 West Pike Street,
P.O. Box 629
Jackson Center, OH
45334 USA
937-596-6111

www.airstream.com

AIRSTREAM[®] + **Mercedes-Benz[®]**

Roll with the Best[®]

Product information, specifications, and photography in this brochure were as accurate as possible at time of printing. Photographs may contain some features that are optional on your vehicle.

Since we continually strive to improve our products, actual products may differ. Prices and specifications are subject to change without notice. All capacities are approximate and dimensions are nominal. Some features or options may be different or unavailable in other countries.

WARNING – The recreational vehicle weight must remain within the manufacturer's specified chassis weight limit. Do not overload the recreational vehicle through the addition of water, options, cargo or otherwise. Your safety depends on not overloading the trailer, axles, and tires.

AIRSTREAM[®], the Airstream travel trailer trade dress, and all related model names, slogans, logos, trade dress, and trademarks are owned or used under license by Airstream, Inc. All other trademarks are owned by their respective owners.