

# ASK AN AIRSTREAMER

WINTERIZING: THE WHYS AND HOWS OF PREPPING YOUR AIRSTREAM  
FOR COLD WEATHER



To test audio, we're playing a  
Spotify playlist from Airstream

# WHAT WE'LL DISCUSS TODAY

**1**

**What is winterizing and why do we do it?**

**2**

**How to winterize your Airstream**

**3**

**One piece of advice from our panel**

**4**

**Q&A**





**CORBIN  
NAKAMURA**



**DIANE TRIPELS**



**RICK MARCH**











**RICK**

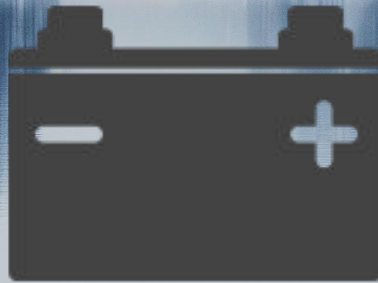
**GENERAL MANAGER,  
AIRSTREAM SERVICE**





# WHY WINTERIZE YOUR AIRSTREAM?

Protect your plumbing, batteries and tires







**FIRST: DRAIN AND  
FLUSH TANKS**





# STEP 1: DRAIN GREY TANK AND FLUSH WASTE TANK

Open drain valves, empty and flush the grey and waste tanks at an RV dump station

- [Rvdumps.com](http://Rvdumps.com)
- Campendium

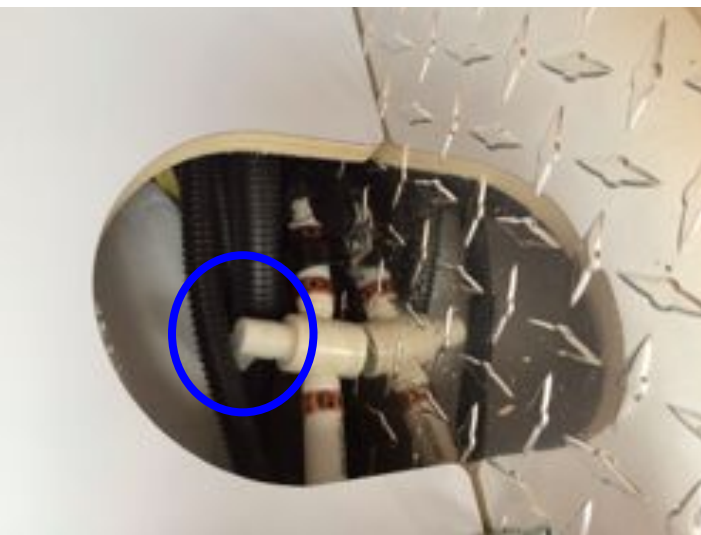
\*This is the only step that cannot be done at your house or storage unit

## STEP 2: EMPTY FRESH TANK

Open fresh drain plug  
(located between wheels on  
tank pan) and empty







# **STEP 3: OPEN LOW POINT DRAIN VALVES**

\*Varies by model





An aerial photograph of a dense forest of evergreen trees covered in a thick layer of snow. The trees are dark green against the white snow, creating a textured pattern across the entire frame. The perspective is from directly above, looking down on the forest canopy.

# **SECOND: WINTERIZE YOUR HOT WATER HEATER**

# TYPES OF HOT WATER HEATERS BY AIRSTREAM MODEL (MY 2021)

**Classic:** Alde



**Basecamp 16:** Truma



**Globetrotter,  
International, Flying  
Cloud, Bambi, Caravel:**  
Girard



**Basecamp 20, Interstate 19  
and Nest:** Suburban



Find your manual at [airstream.com/owners/manuals/](https://www.airstream.com/owners/manuals/)



# **STEP 1: TURN OFF HOT WATER HEATER AND LET COOL**

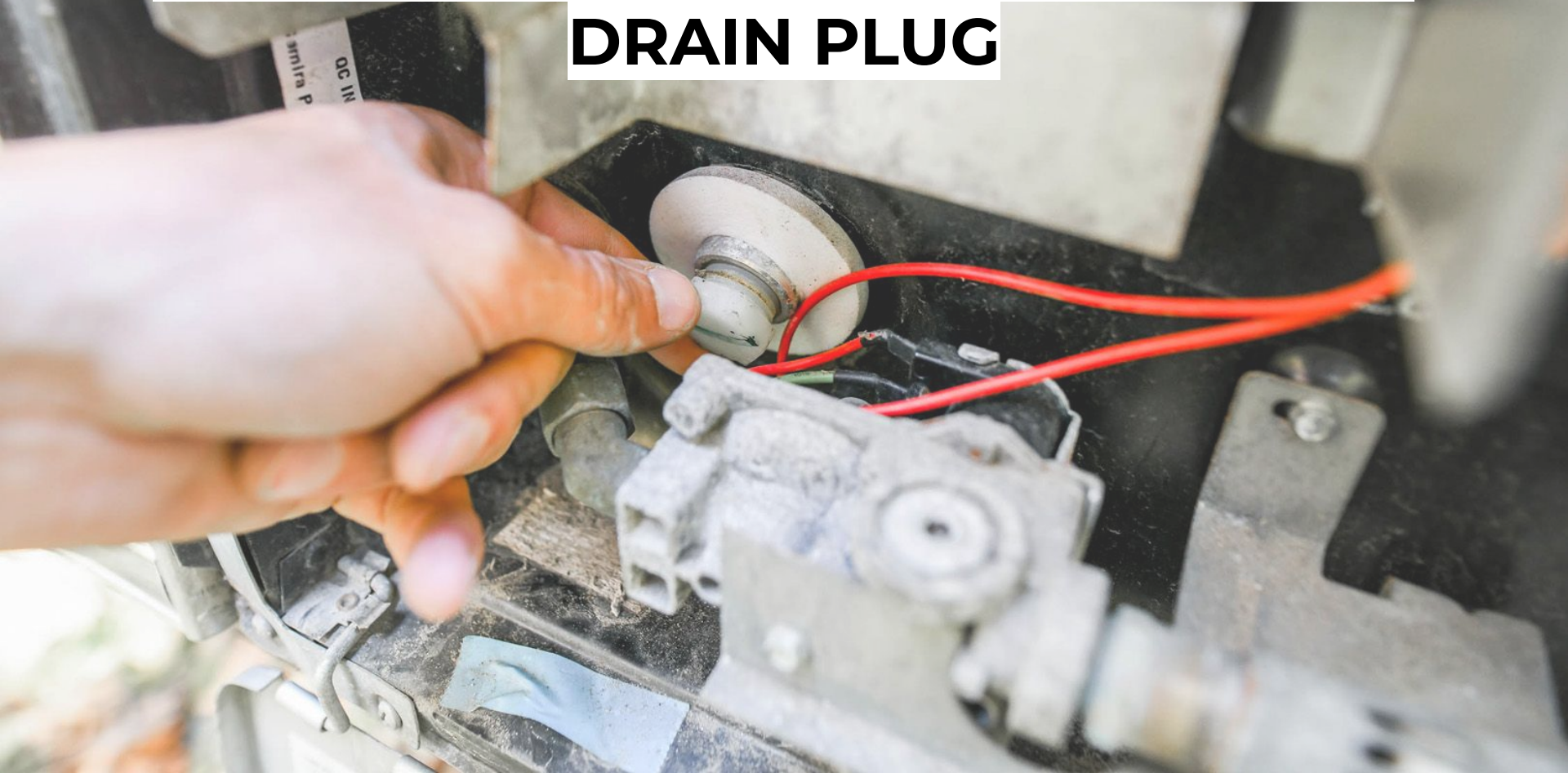


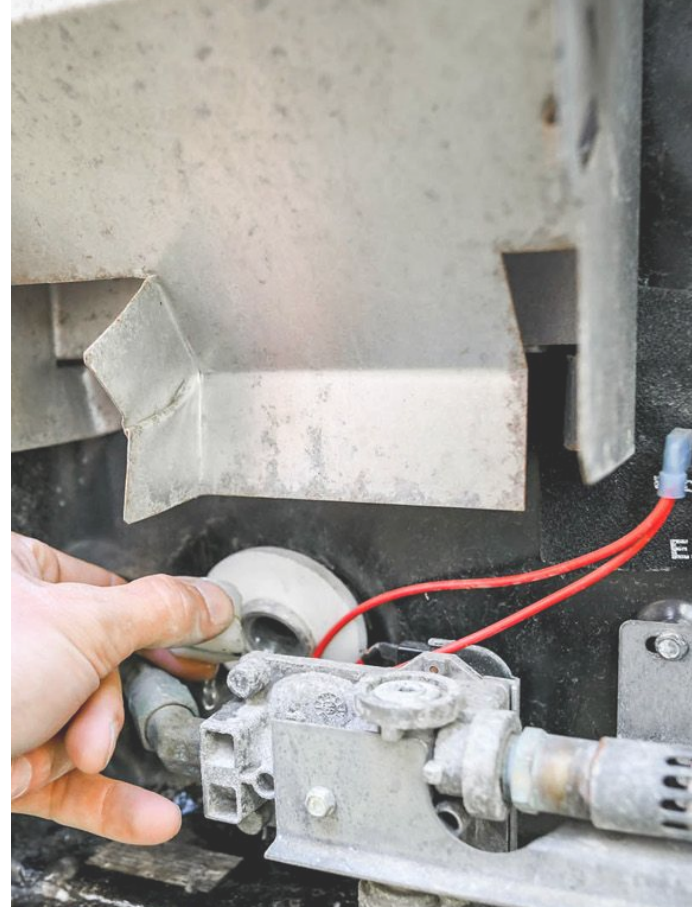
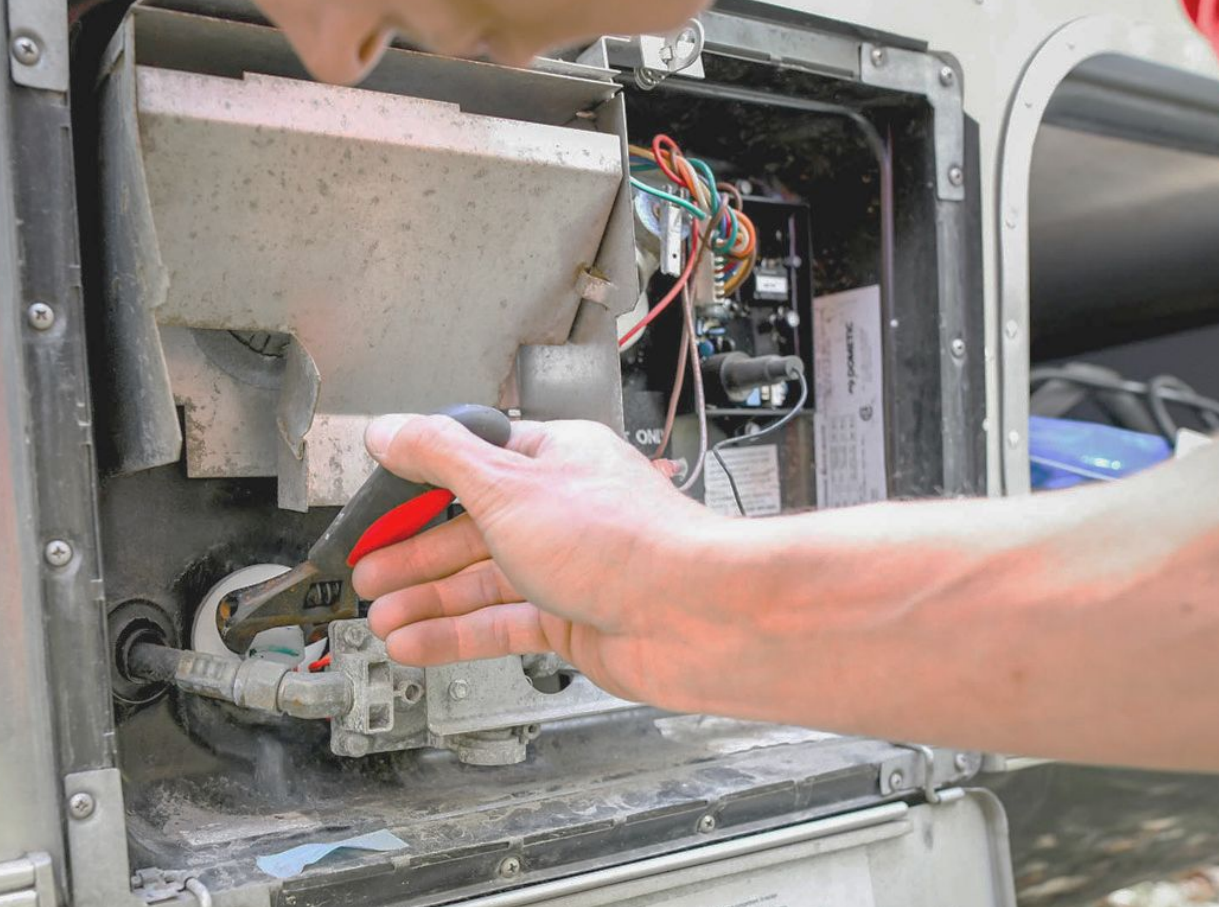


**STEP 2: OPEN THE WATER HEATER  
PRESSURE RELIEF VALVE**



## **STEP 3: LOCATE THE WATER HEATER DRAIN PLUG**





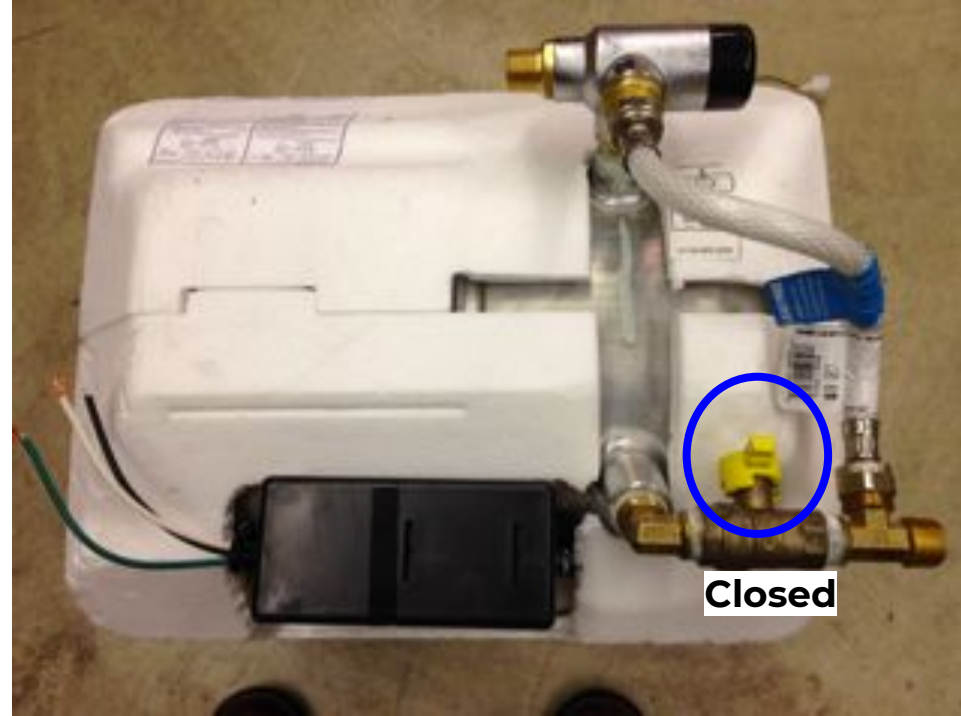
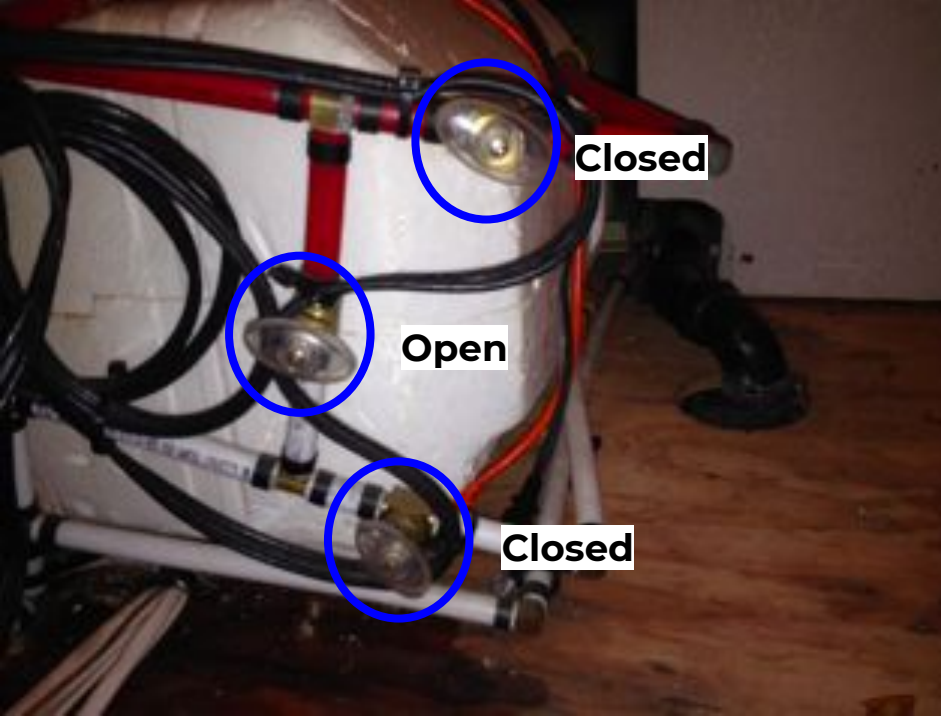
**STEP 4: LOOSEN PLUG; DRAIN WATER**







**STEP 5: CLOSE PRESSURE RELIEF VALVE**



## STEP 6: TURN ON HOT WATER HEATER BYPASS VALVE

\*You may have a one or three valve system



# TWO WAYS TO WINTERIZE PLUMBING LINES

Use an air compressor to  
blow out the water

OR

Pump RV antifreeze  
throughout the plumbing  
system

# USING AN AIR COMPRESSOR



What you'll need:

- Air compressor
- Blow out plug
- RV Antifreeze (for drains only)

\*If your air compressor has a pressure setting, do not exceed 50 PSI.





# STEP 1: BLOW OUT WASTE TANK FLUSH

- Screw the Camco blow out plug into the black tank flush valve; connect the air compressor nozzle, and begin applying compressed air
- **Be sure to keep the black tank dump valve open so the air pressure does not build up in the tank**



## **STEP 2: CONNECT BLOW OUT PLUG TO CITY WATER INLET**

- Screw the Camco blow out plug into the city water connection on the exterior wall of your Airstream; connect the air compressor nozzle, and begin applying compressed air



# STEP 3: USE AIR TO REMOVE WATER

**A**



Turn water pump on

**B**



Close low point drains

**C**



Flush toilet

**D**



Turn on inside and outside shower

**E**



Turn on bathroom faucet

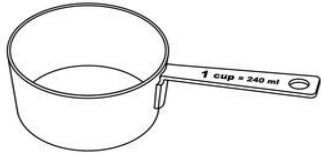
**F**



Turn on kitchen faucet

# STEP 4: ADD ANTIFREEZE

Add ONE cup of antifreeze to  
all drains and toilet





# USING RV ANTIFREEZE

What you'll need:

- RV Antifreeze
- Pump Converter Kit
- Blow Out Plug ( for waste tank check valve)

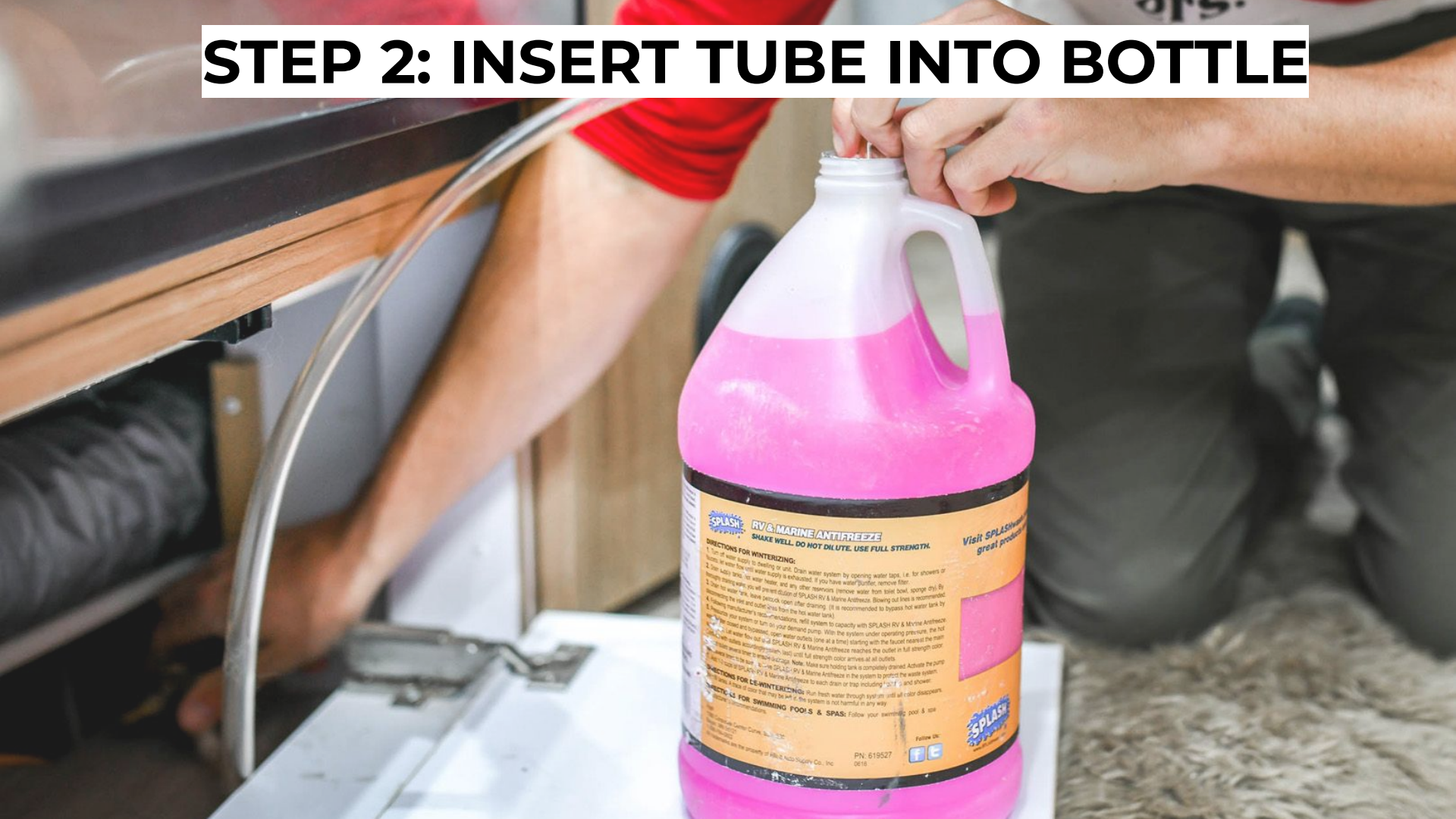


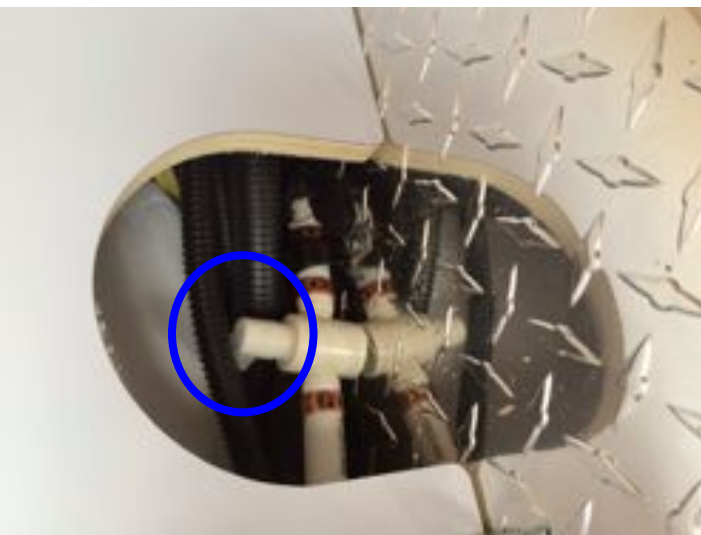
# **STEP 1: ATTACH PUMP CONVERTER KIT TO INLET SIDE OF WATER PUMP**





# STEP 2: INSERT TUBE INTO BOTTLE





# **STEP 3: CLOSE LOW POINT DRAIN VALVES**

\*Varies by model



# STEP 4: TURN ON WATER PUMP



# STEP 5: FLUSH ANTIFREEZE

One by one; turn on the following until you see the red color of the RV antifreeze, then turn off:

**A**



Flush toilet

**B**



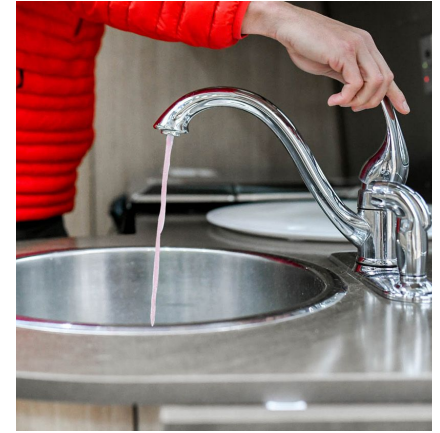
Turn on inside  
and outside  
shower

**C**



Turn on bathroom  
faucet

**D**



Turn on kitchen  
faucet



# STEP 6: TURN OFF WATER PUMP



A misty forest scene with evergreen trees. The background is a dense forest of tall, dark evergreen trees, possibly spruce or fir, covered in a light layer of snow or frost. The scene is shrouded in a thick, white mist or fog, which obscures the upper parts of the trees and the sky, creating a serene and somewhat mysterious atmosphere. The lighting is soft and diffused, typical of a foggy day.

# **BEYOND THE PLUMBING**





# FRIDGE AND FREEZER

- Make sure that fridge and freezer are defrosted and empty
- Leave the fridge and freezer doors open to allow residual moisture to escape
- Crumple up newspaper and place in fridge and freezer to help absorb moisture; remove after 24-48 hours
- Put open boxes of baking soda in fridge to help eliminate odors during storage



# 7-WAY CONNECTOR

Apply dielectric grease to the 7-way connector to prevent corrosion







# PREPPING TIRES FOR STORAGE



# BATTERY STORAGE

## KEEP BATTERIES IN AIRSTREAM

- Batteries should be fully charged when placed in storage
- Batteries should be kept charged; this will require monthly plug-ins (if your Airstream has solar and parked outside, this is usually not necessary)
- Do not recommend plugging in full-time
- Put Airstream in store mode

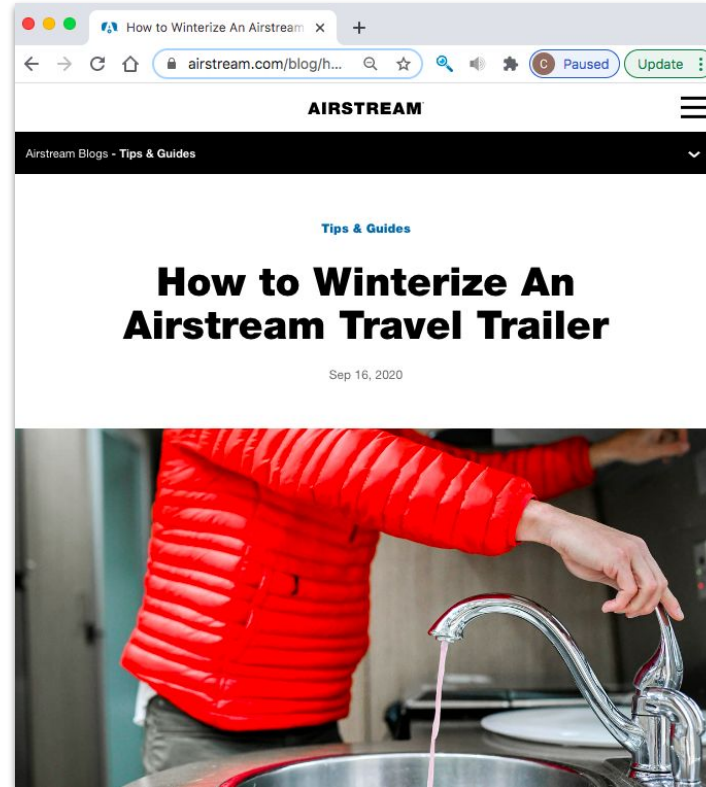
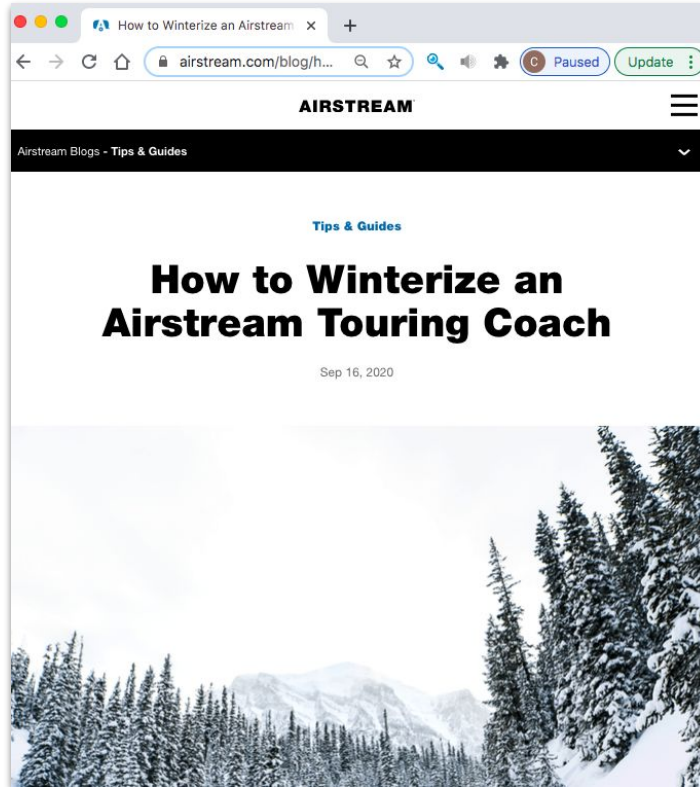
OR

## REMOVE BATTERIES FROM AIRSTREAM

- Keep in garage or workshop to check on them
- Consider using a battery tender



# ONLINE RESOURCES



# **USING YOUR AIRSTREAM IN THE WINTER**









# DIANE'S WINTER GEAR





# ONE PIECE OF ADVICE

